

ACRYSTAR
ACRYLIC LAMINATES

REFL
EXIA
PREMIUM ACRYLIC
SURFACES



Termite &
Pest Proof



Fire
Retardant



Fully
Water Proof



Resistant to
Chemical



Eco
Friendly



Glossy
Surface



Light
Weight



Suitable for
Indoor Use

ACRYSTAR
ACRYLIC LAMINATES

PREMIUM ACRYLIC
SURFACES



ACRYSTAR
ACRYLIC LAMINATES

REFL
EXIA
PREMIUM ACRYLIC
SURFACES

WHERE EVERY SURFACE IS A MIRROR OF *elegance*

12'

14.5'

about us

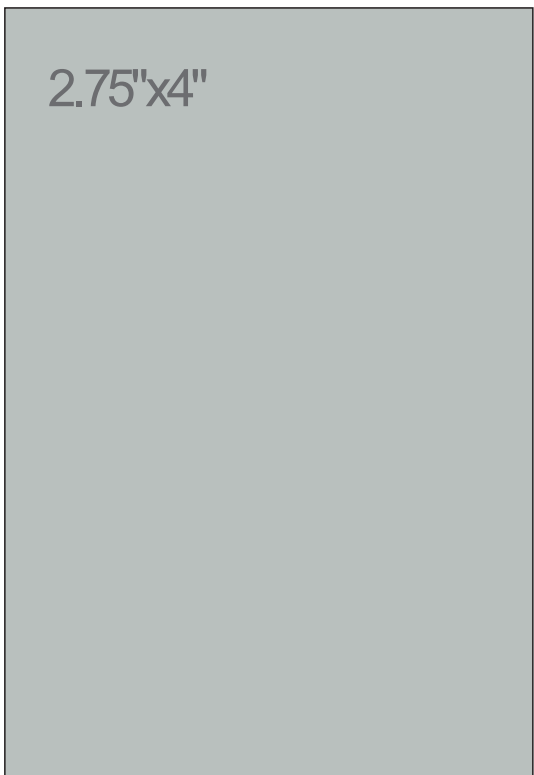
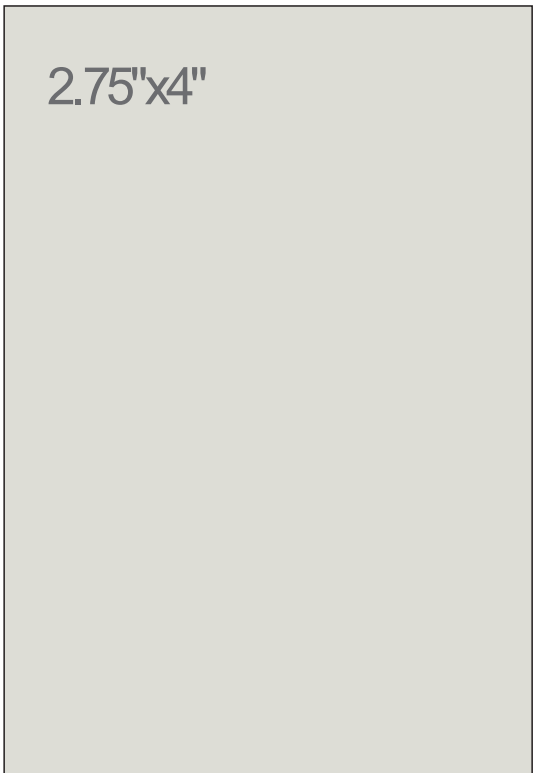
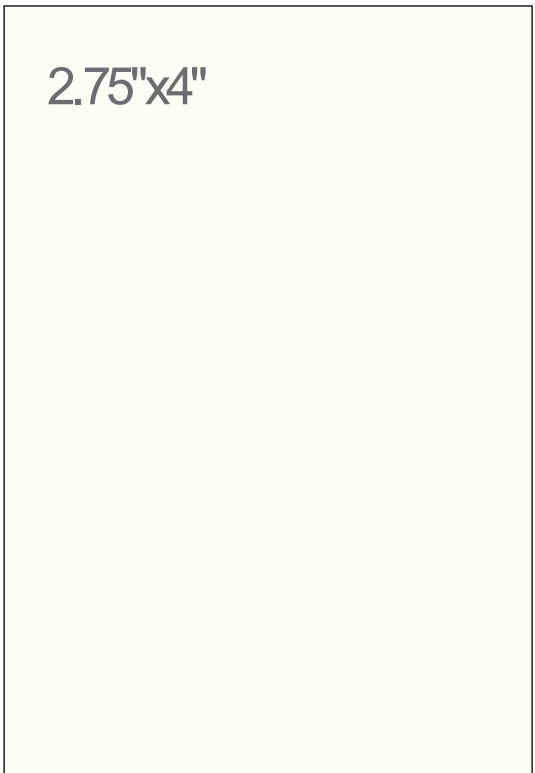
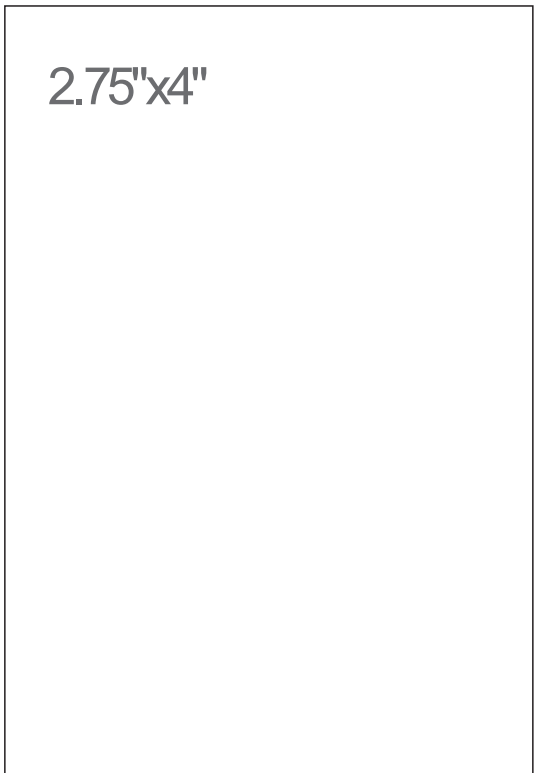
our credentials page

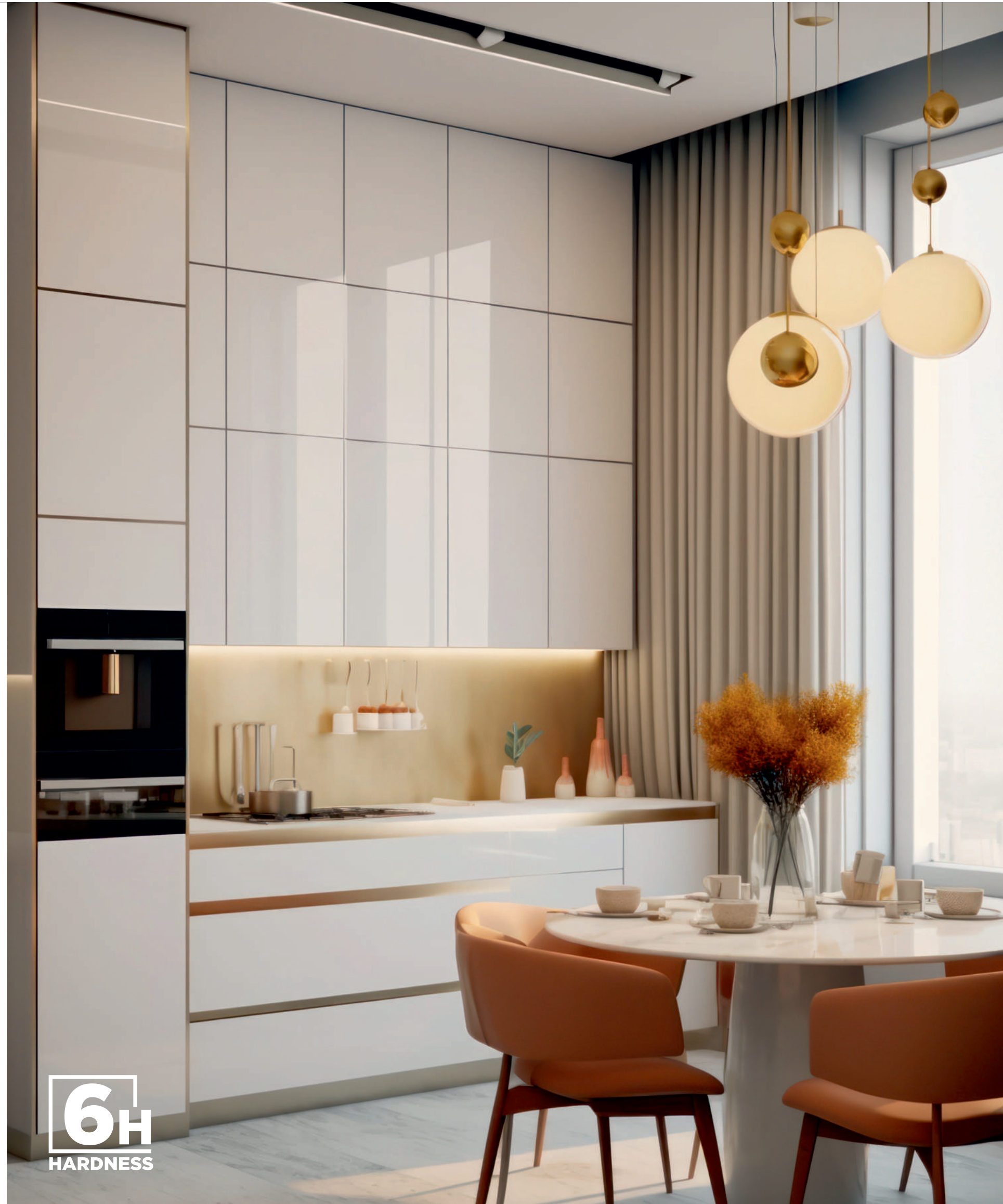
why choose us

SOLID SEPARATOR

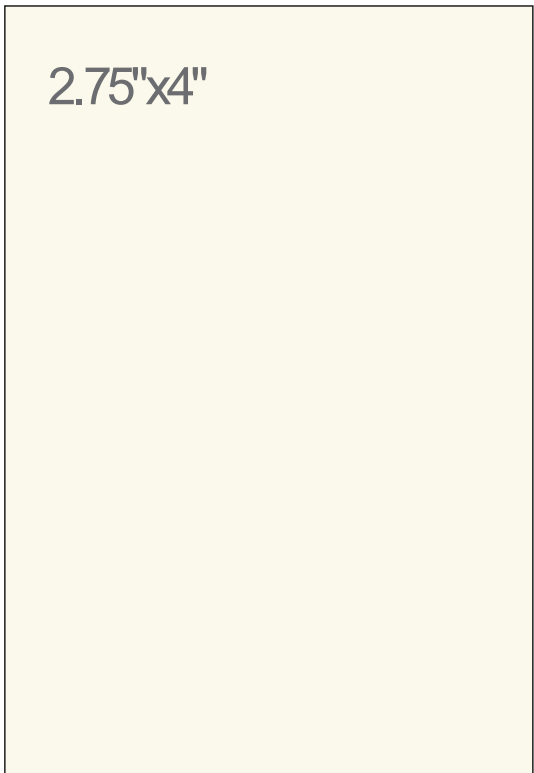


SOLID GLOSS SERIES

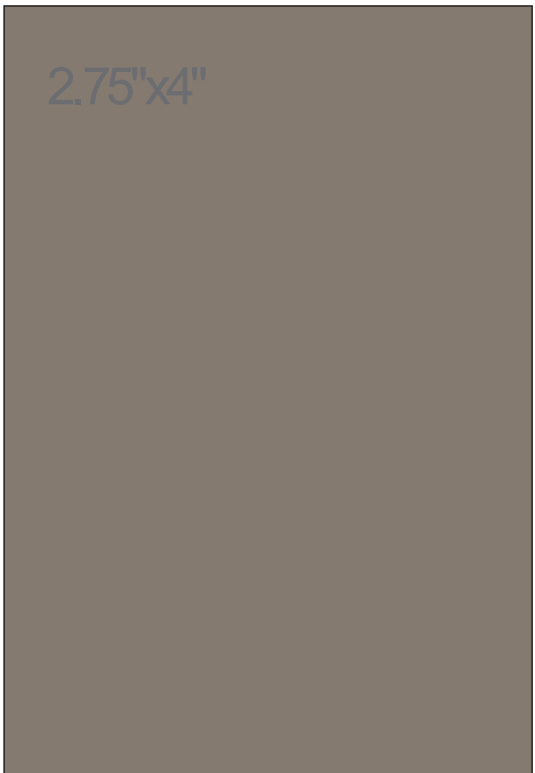




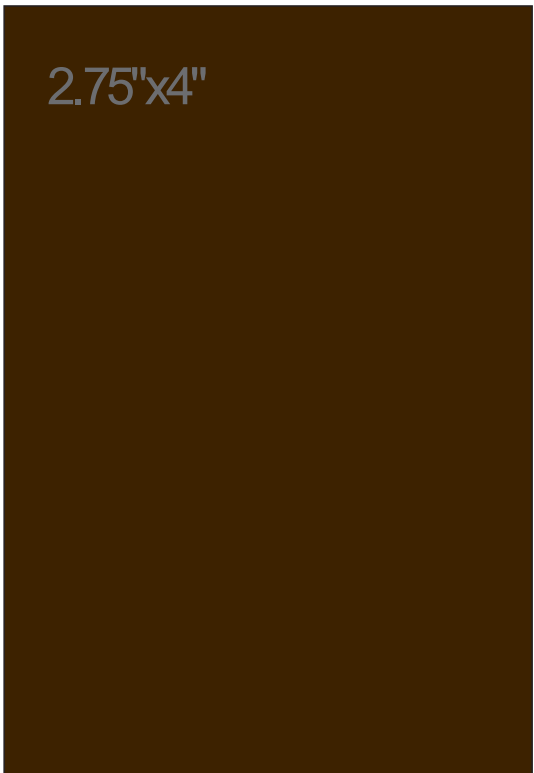
SOLID GLOSS SERIES



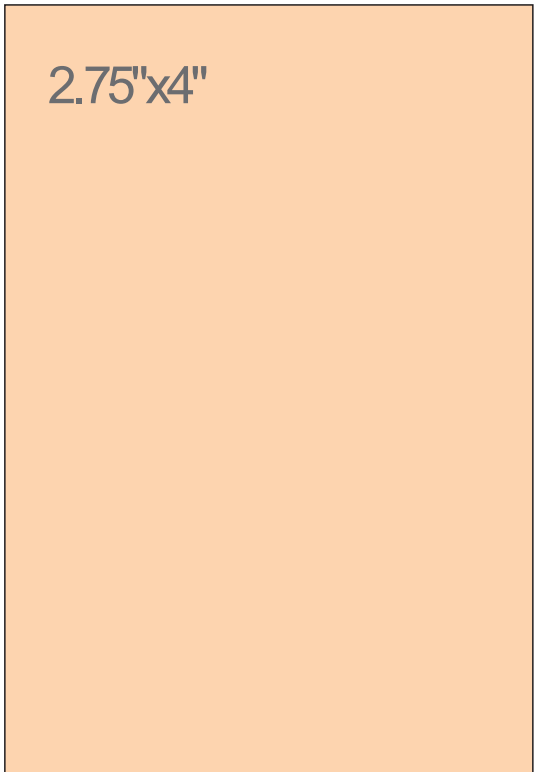
ACR-107 SOLIDS



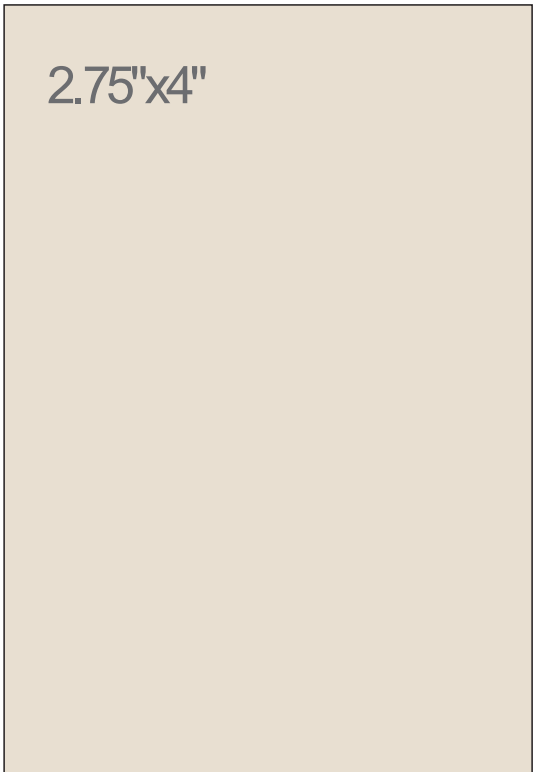
ACR-127 SOLIDS



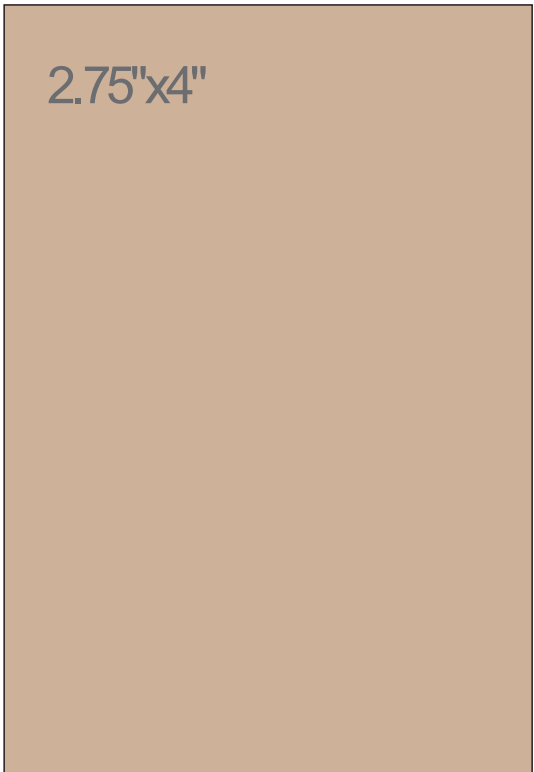
ACR-109 SOLIDS



ACR-110 SOLIDS



ACR-111 SOLIDS

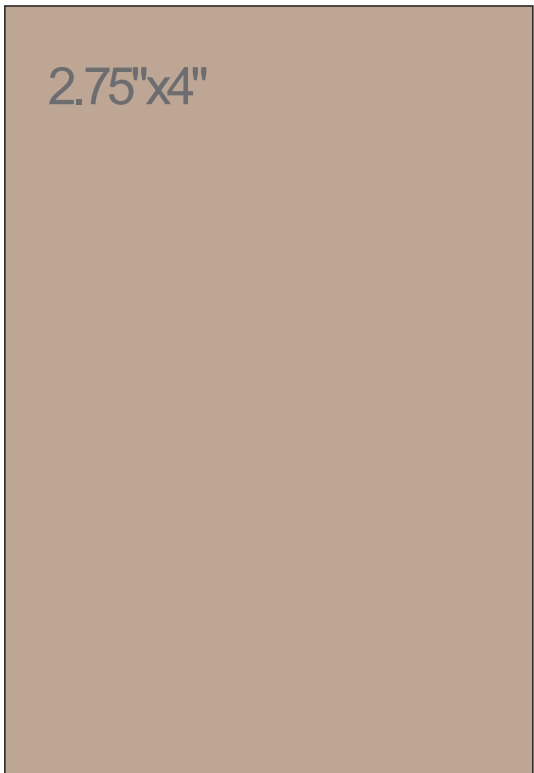


ACR-113 SOLIDS

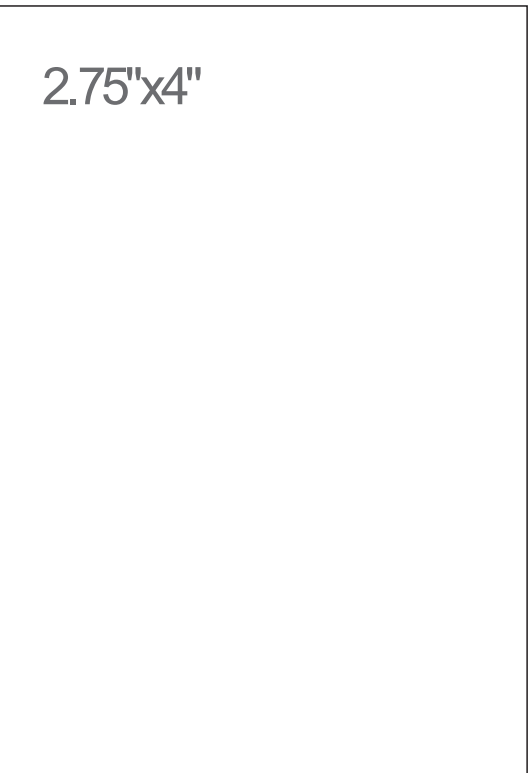




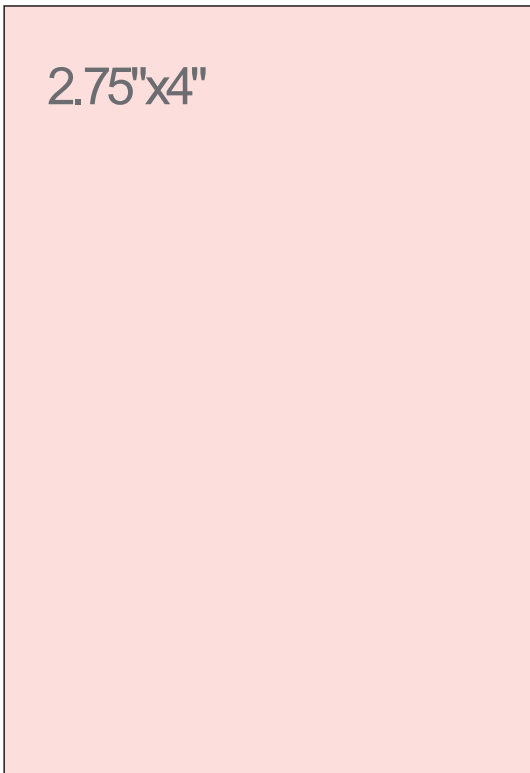
SOLID GLOSS SERIES



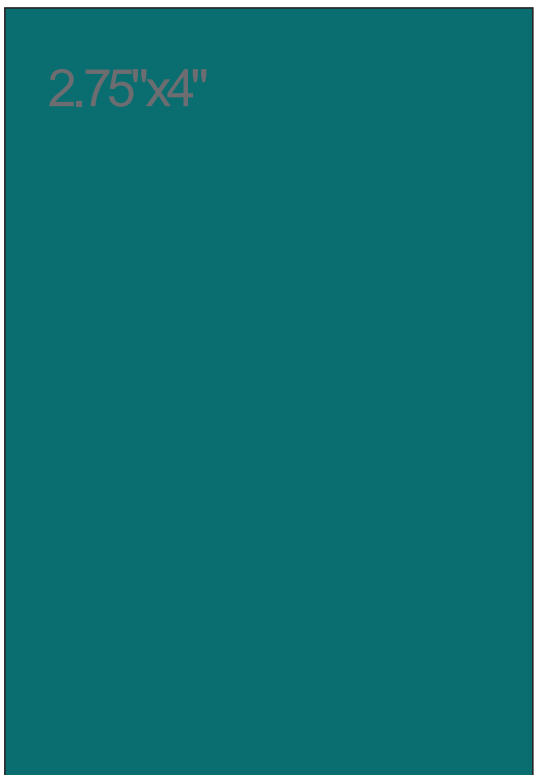
ACR-114 SOLIDS



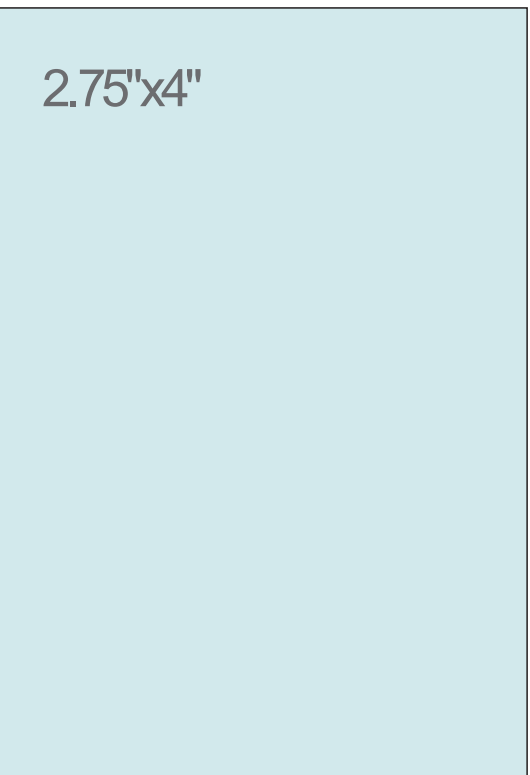
ACR-116 SOLIDS



ACR-117 SOLIDS



ACR-118 SOLIDS



ACR-125 SOLIDS

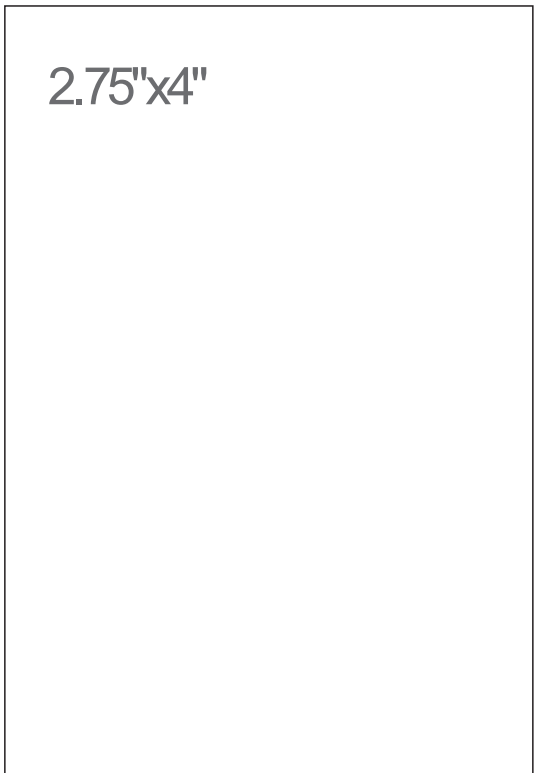


ACR-121 SOLIDS

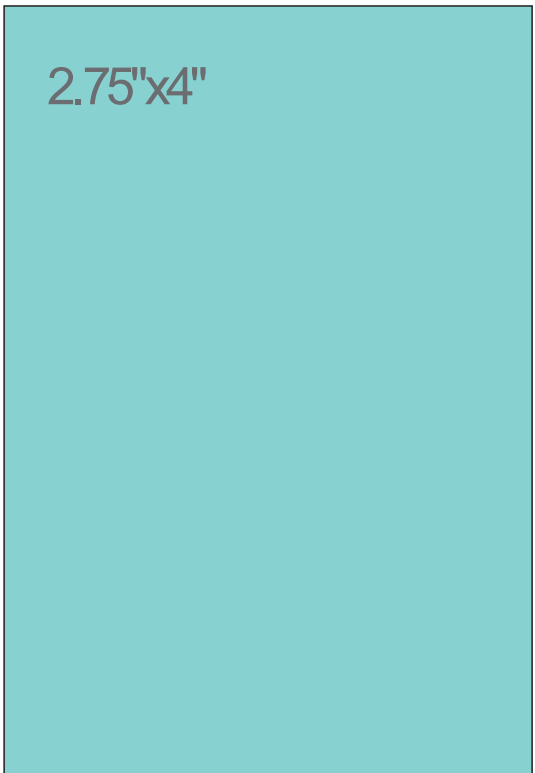




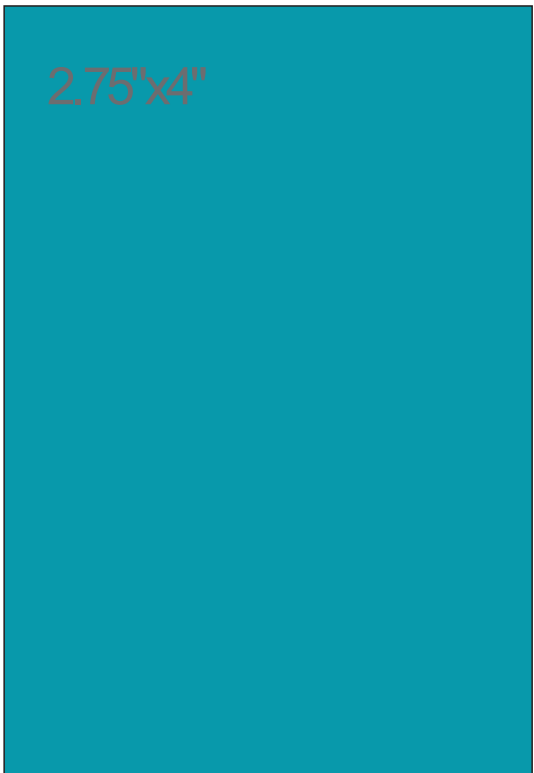
SOLID GLOSS SERIES



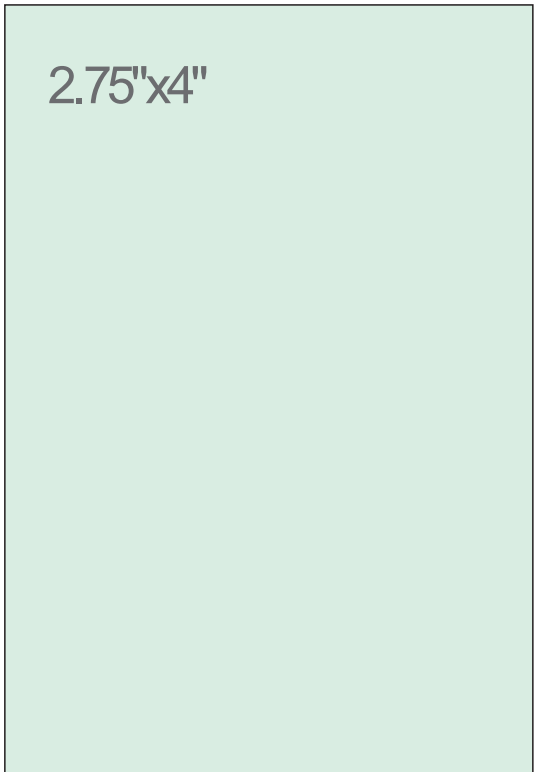
ACR-126 SOLIDS



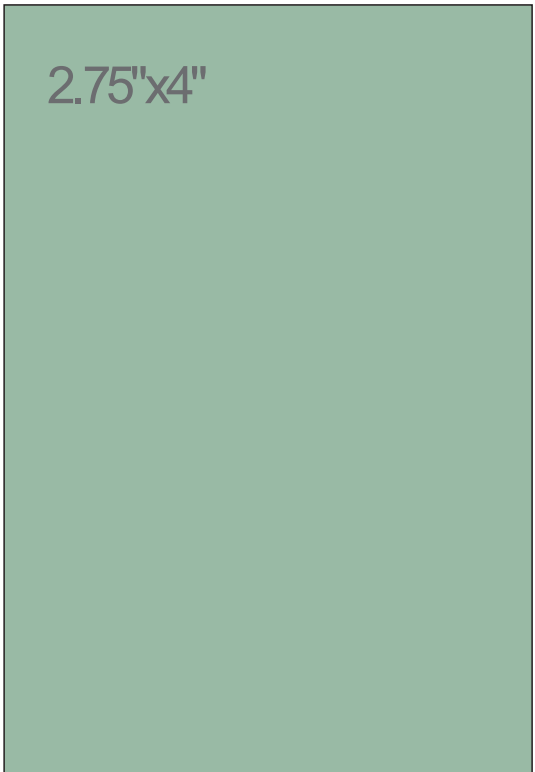
ACR-123 SOLIDS



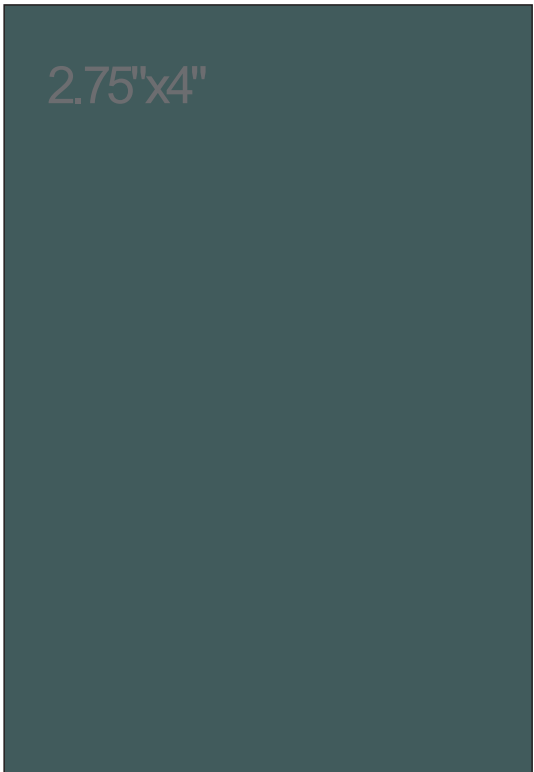
ACR-124 SOLIDS



ACR-119 SOLIDS



ACR-122 SOLIDS



ACR-120 SOLIDS

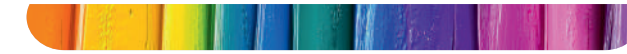




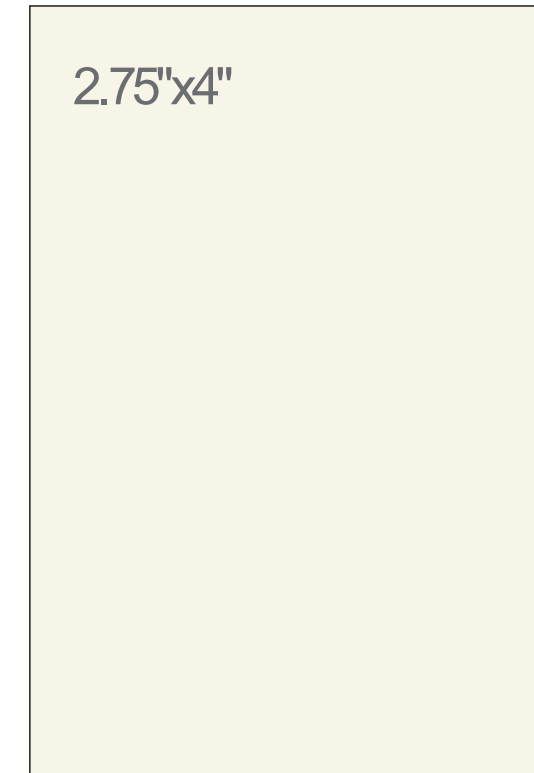
6H
HARDNESS



SOLID GLOSS SERIES

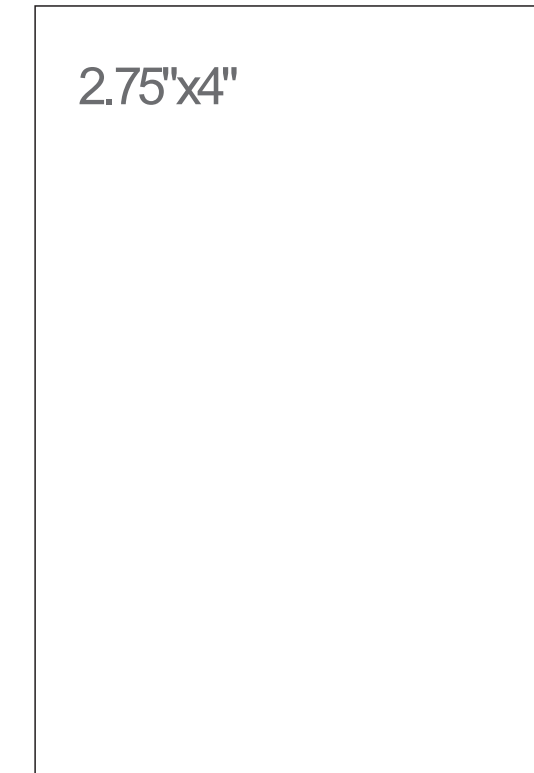


ACRYSTAR
ACRYLIC LAMINATES



ACR-502

SOLIDS



ACR-512

SOLIDS



ACR-530

SOLIDS



ACR-560

SOLIDS



ACR-561

SOLIDS



ACR-562

SOLIDS





SOLID MATT SERIES



2.75"x4"

ACR-101

MATT

2.75"x4"

ACR-102

MATT

2.75"x4"

ACR-111

MATT

2.75"x4"

ACR-114

MATT

2.75"x4"

ACR-105

MATT

2.75"x4"

ACR-122

MATT



SPARKLE SEPARATOR



SPARKLE SERIES

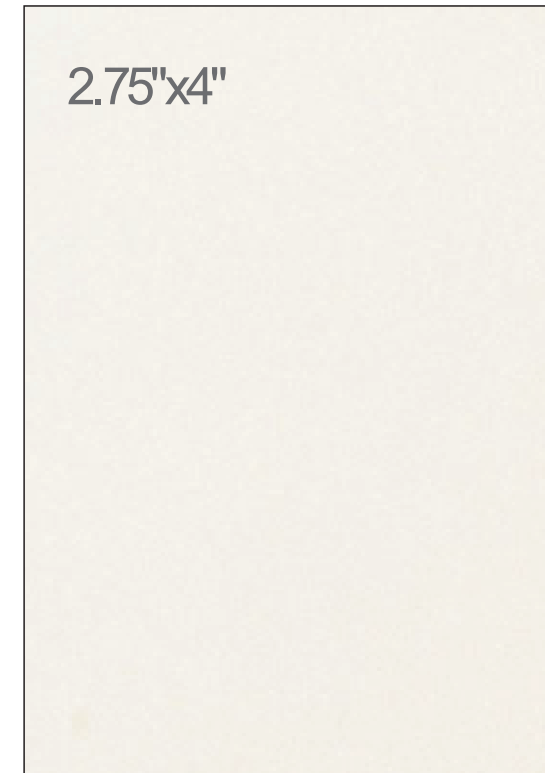


ACRYSTAR
ACRYLIC LAMINATES



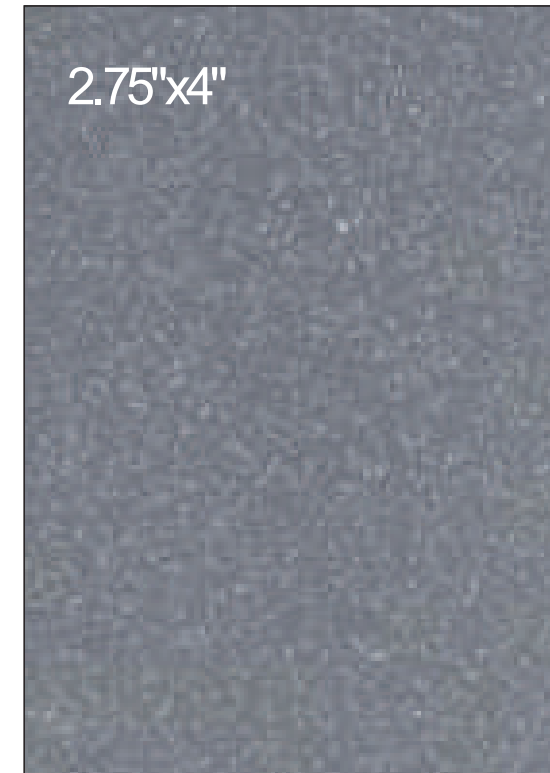
ACR-201

SPARKLE



ACR-202

SPARKLE



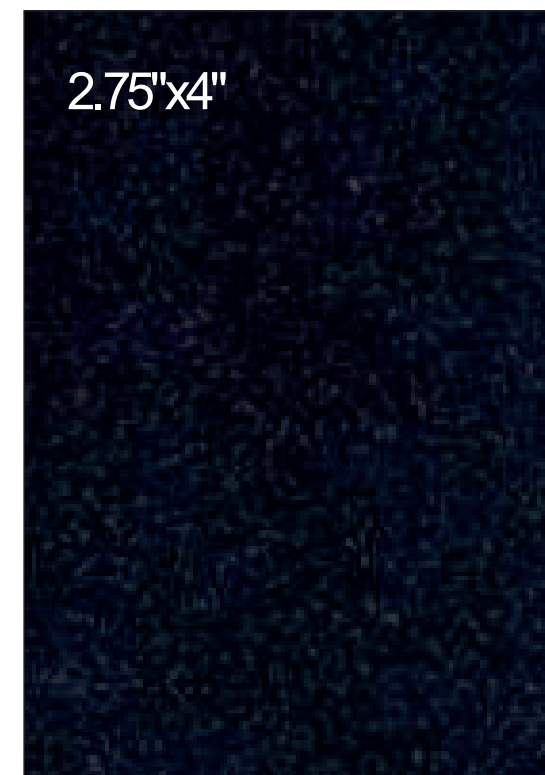
ACR-203

SPARKLE



ACR-204

SPARKLE



ACR-205

SPARKLE



ACR-1032

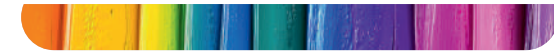
SPARKLE





6H
HARDNESS

MIRROR SERIES



2.75"x4"

ACR-501

MIRROR

2.75"x4"

ACR-502

MIRROR

ACRYSTAR
ACRYLIC LAMINATES

2.75"x4"

ACR-503

MIRROR

2.75"x4"

ACR-504

MIRROR

ELEMENTS



METALLIC GLOSS SEPARATOR



METALLIC GLOSS SERIES



2.75"x4"

ACR-901 METALLIC GLOSS

2.75"x4"

ACR-403 METALLIC GLOSS

2.75"x4"

ACR-405 METALLIC GLOSS

2.75"x4"

ACR-406 METALLIC GLOSS

2.75"x4"

ACR-408 METALLIC GLOSS

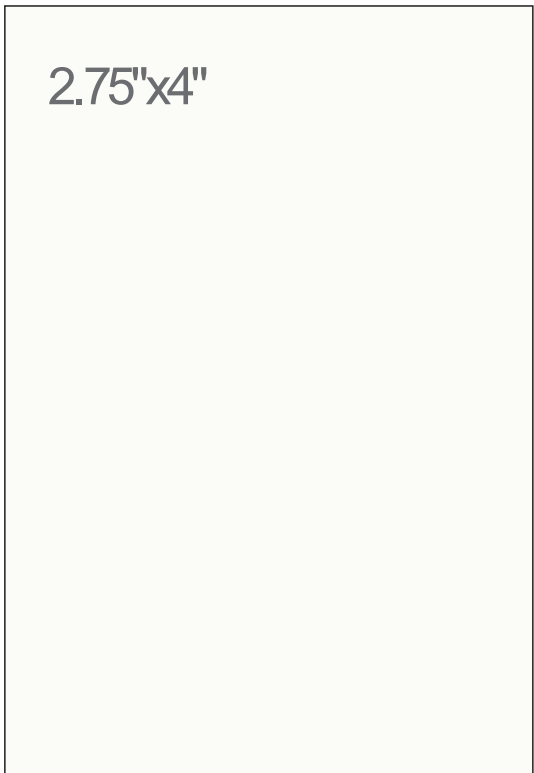
2.75"x4"

ACR-412 METALLIC GLOSS





METALLIC MATT SERIES



ACR-901 METALLIC MATT



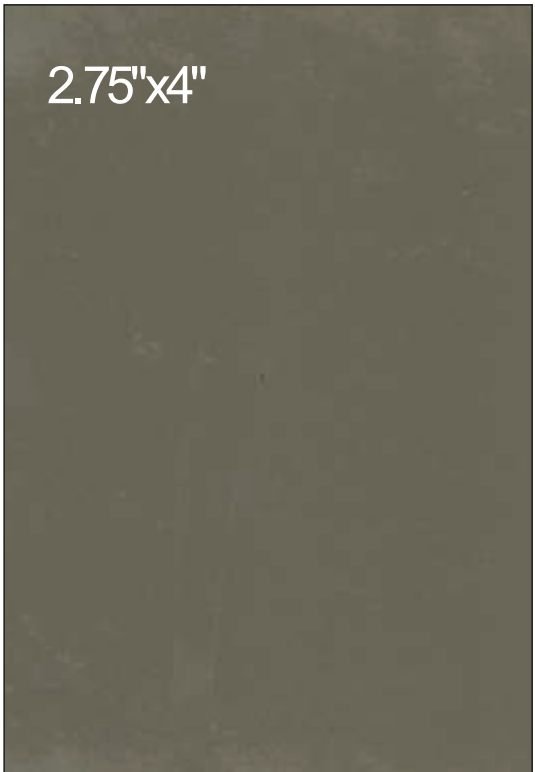
ACR-403 METALLIC MATT



ACR-405 METALLIC MATT



ACR-406 METALLIC MATT



ACR-408 METALLIC MATT



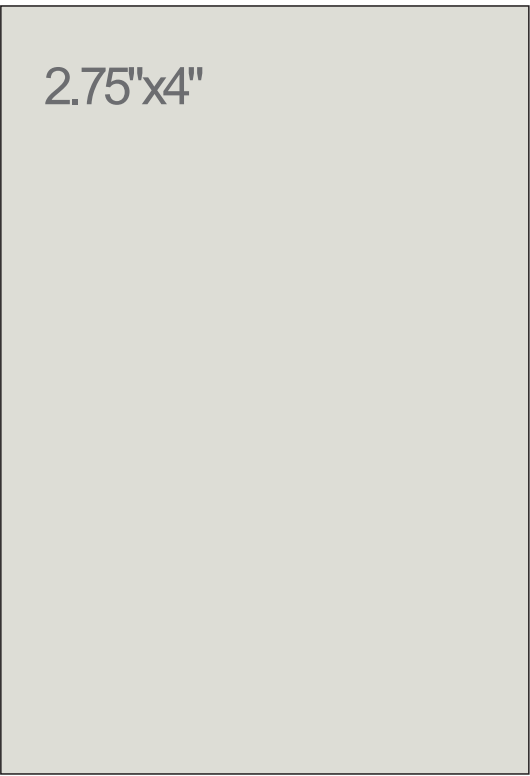
ACR-412 METALLIC MATT



SOLID FLUTE SEPARATOR



SOLID FLUTE SERIES



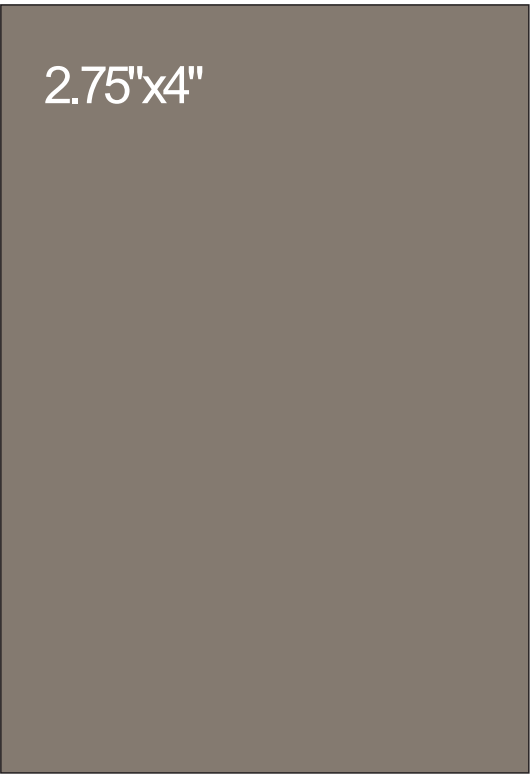
ACR-103 FLUTE



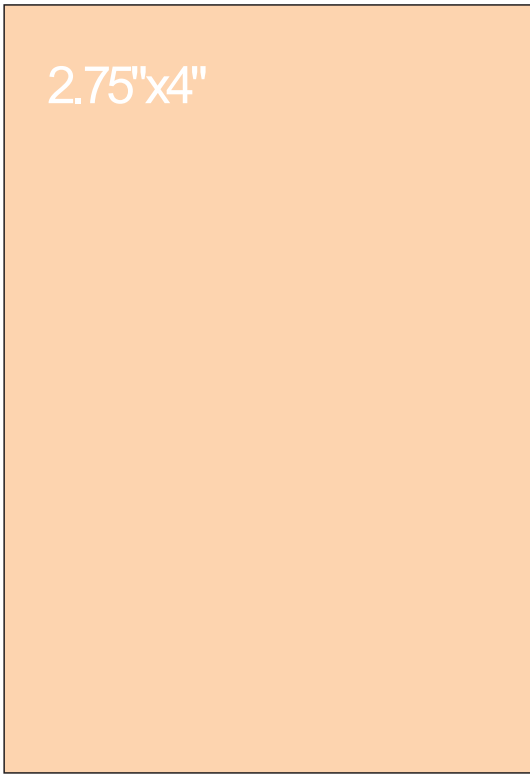
ACR-105 FLUTE



ACR-106 FLUTE



ACR-127 FLUTE



ACR-110 FLUTE

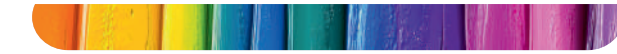




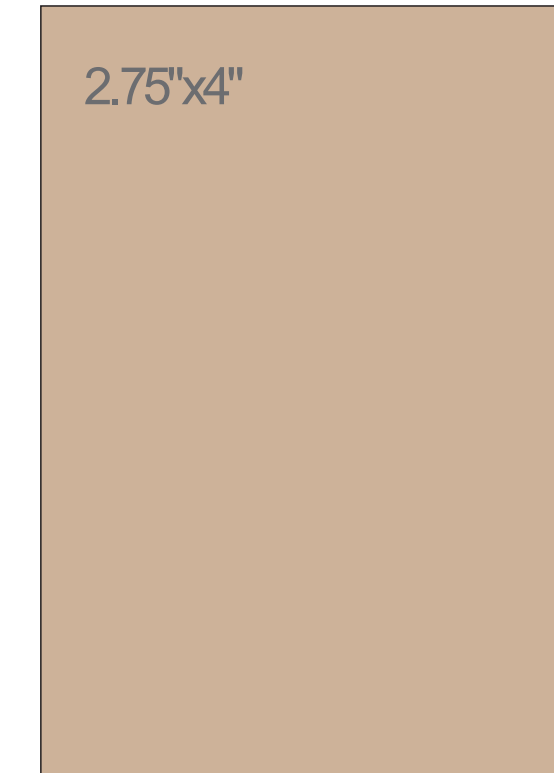
6H
HARDNESS



SOLID FLUTE SERIES

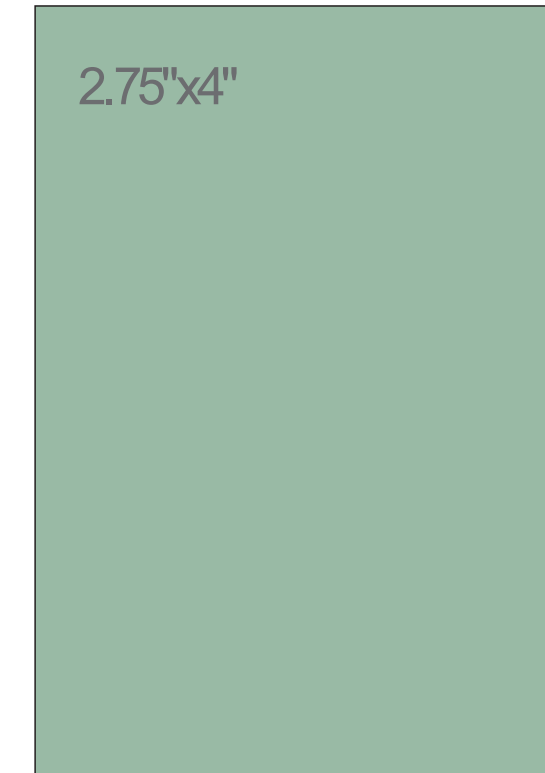


ACRYSTAR
ACRYLIC LAMINATES



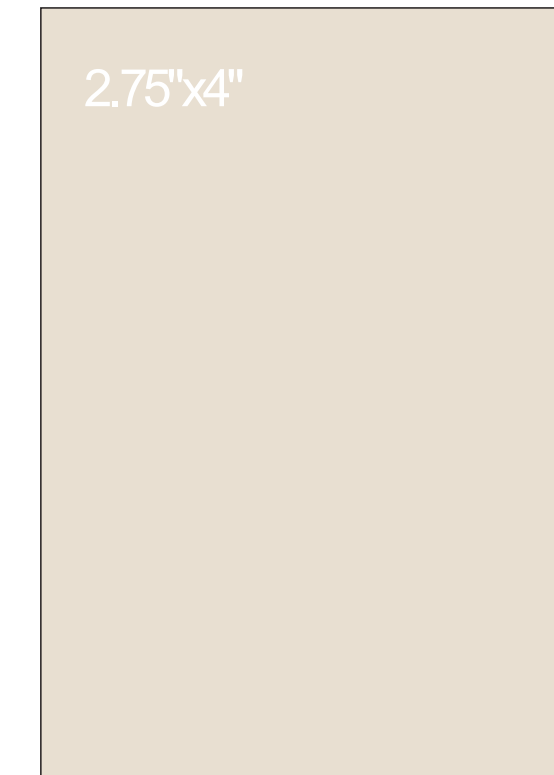
ACR-113

FLUTE



ACR-122

FLUTE



ACR-111

FLUTE



ACR-118

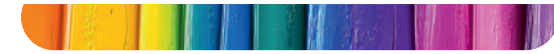
FLUTE



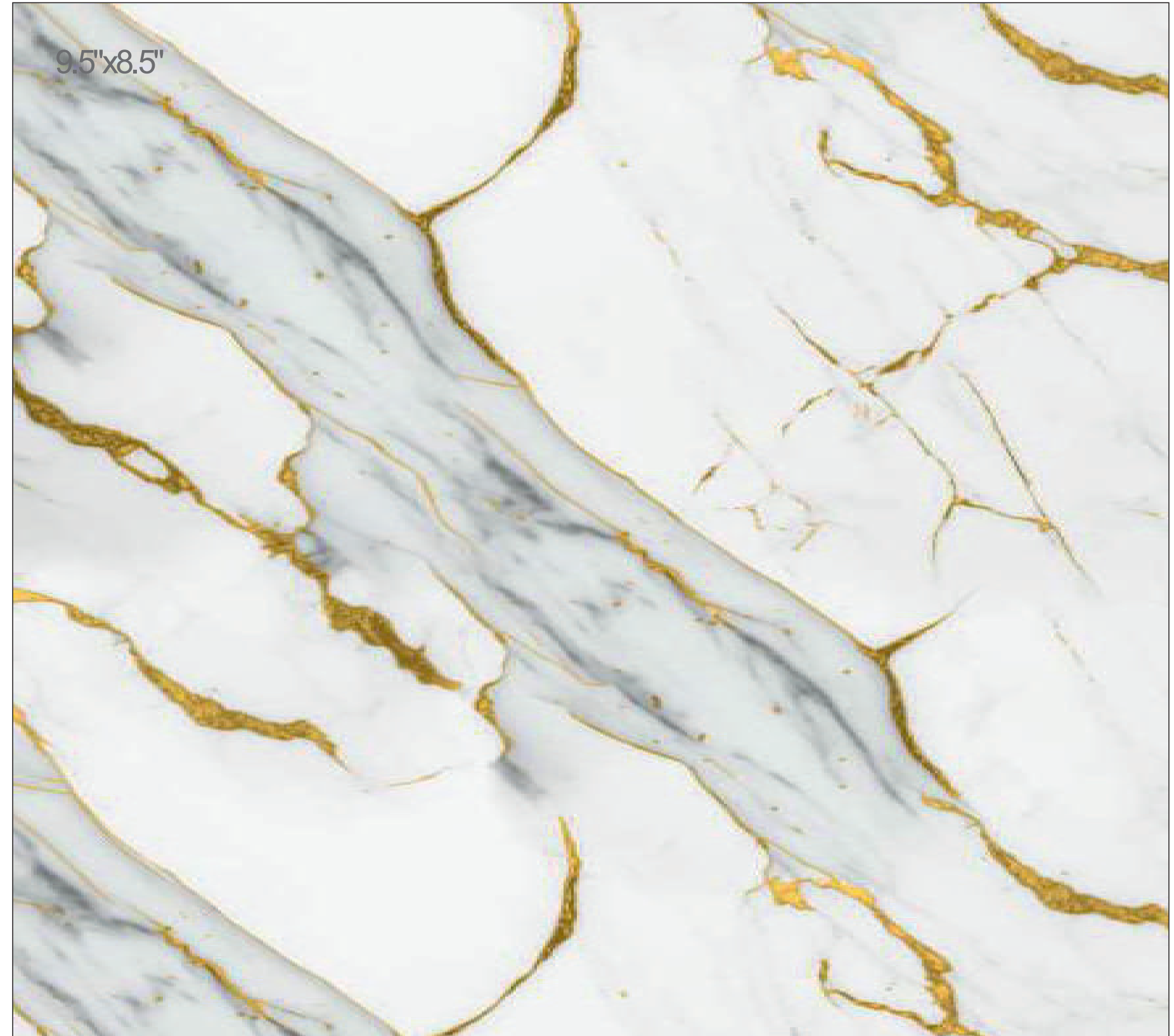
MARBLE SEPARATOR



MARBLE SERIES



ACRYSTAR
ACRYLIC LAMINATES



ACR-621

MARBLE



Thickness
1.25mm



Easy
To Roll



Unbreakable



Anti - Yellow
Technology



Highly
Durable



100% Scratch
Resistant



Ultra
Gloss Finish



Suitable for
Indoor Use



Eco
Friendly



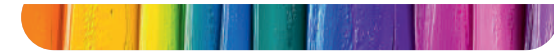
Water
Resistant



6H
HARDNESS



MARBLE SERIES

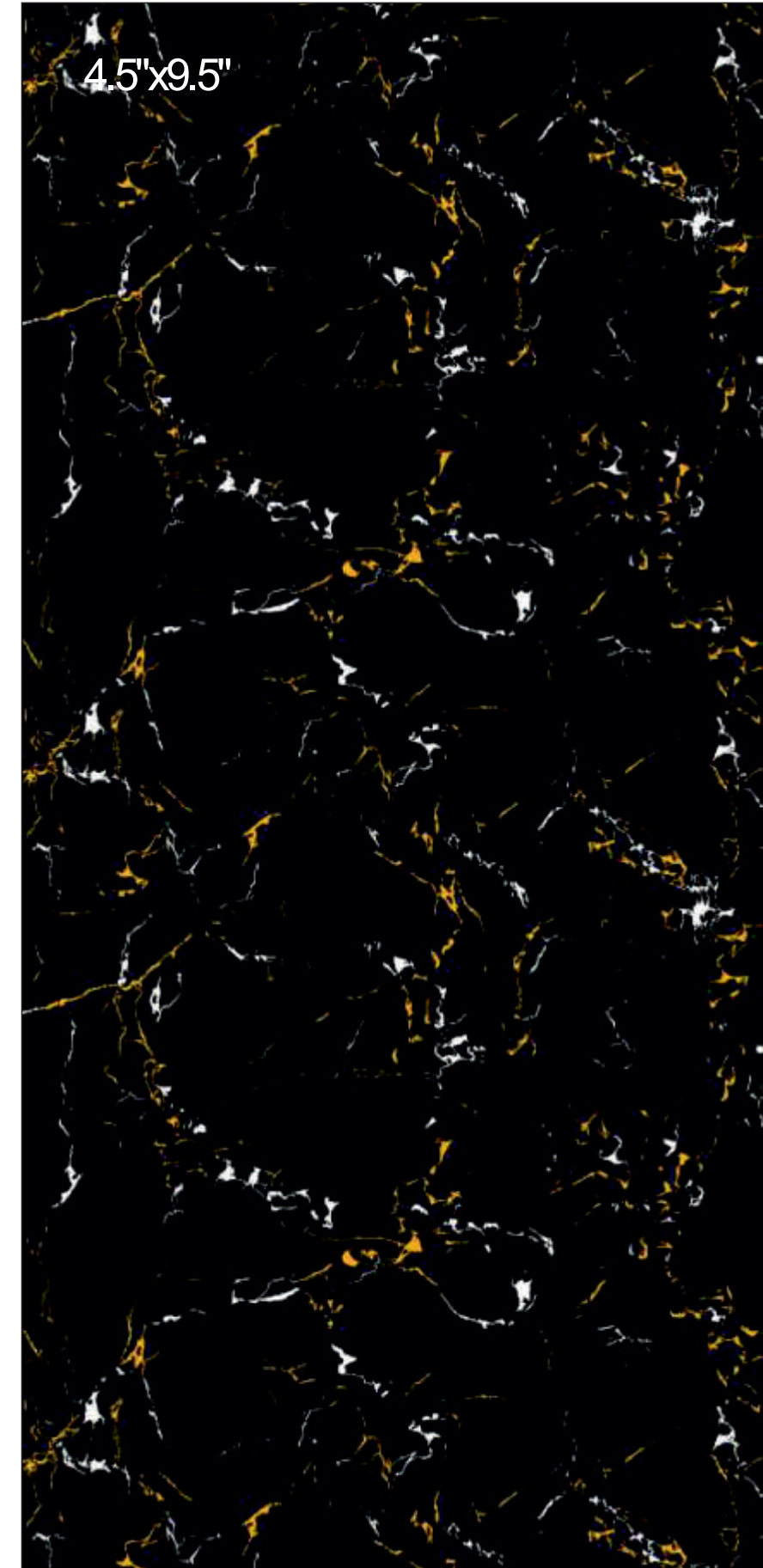


ACRYSTAR
ACRYLIC LAMINATES



ACR-624

MARBLE



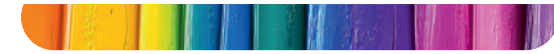
ACR-617

MARBLE





MARBLE SERIES



ACRYSTAR
ACRYLIC LAMINATES



ACR-618

MARBLE



ACR-619

MARBLE





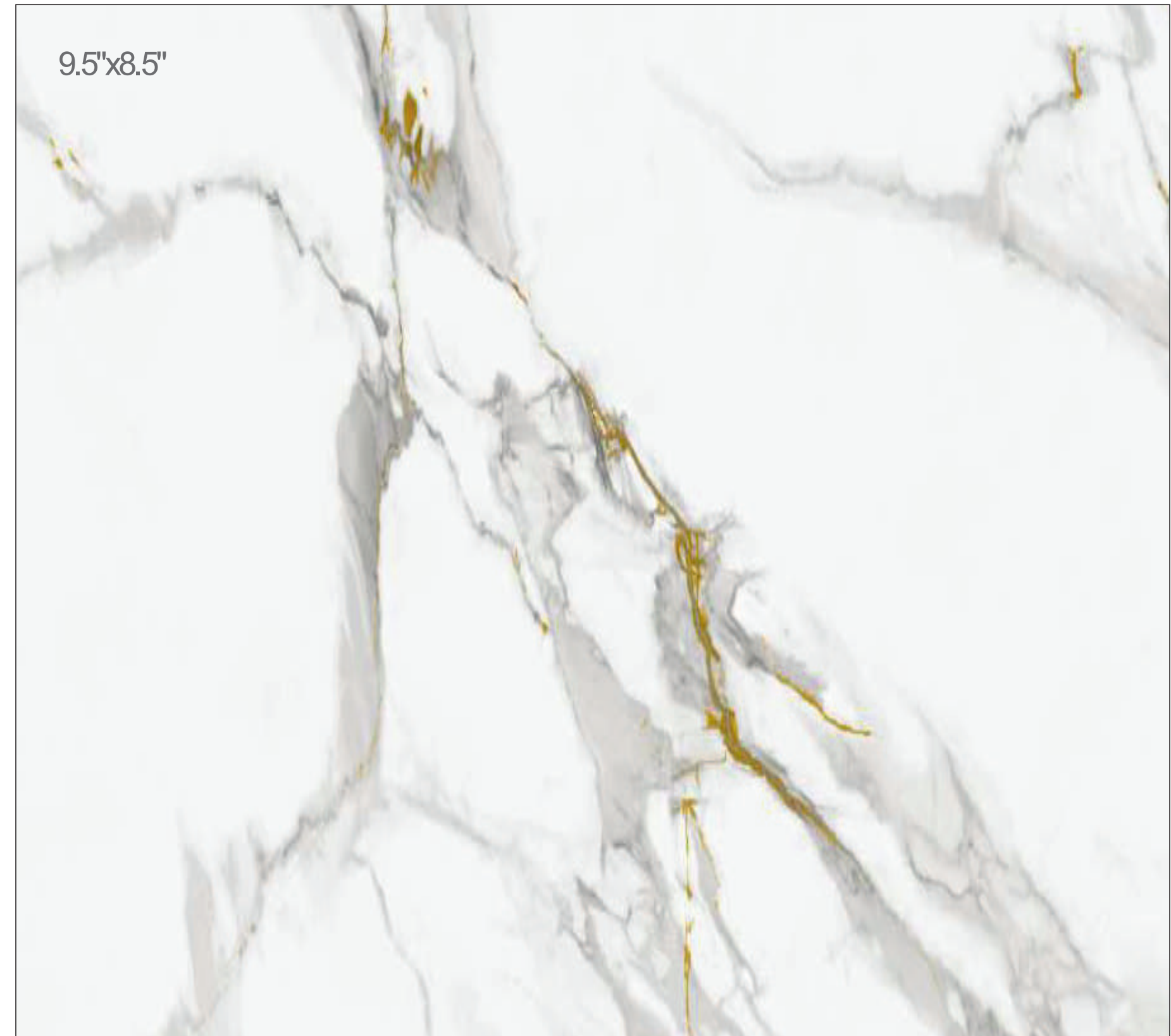
6H
HARDNESS



MARBLE SERIES



ACRYSTAR
ACRYLIC LAMINATES



ACR-620

MARBLE





MARBLE SERIES



ACR-610

MARBLE



ACR-626

MARBLE





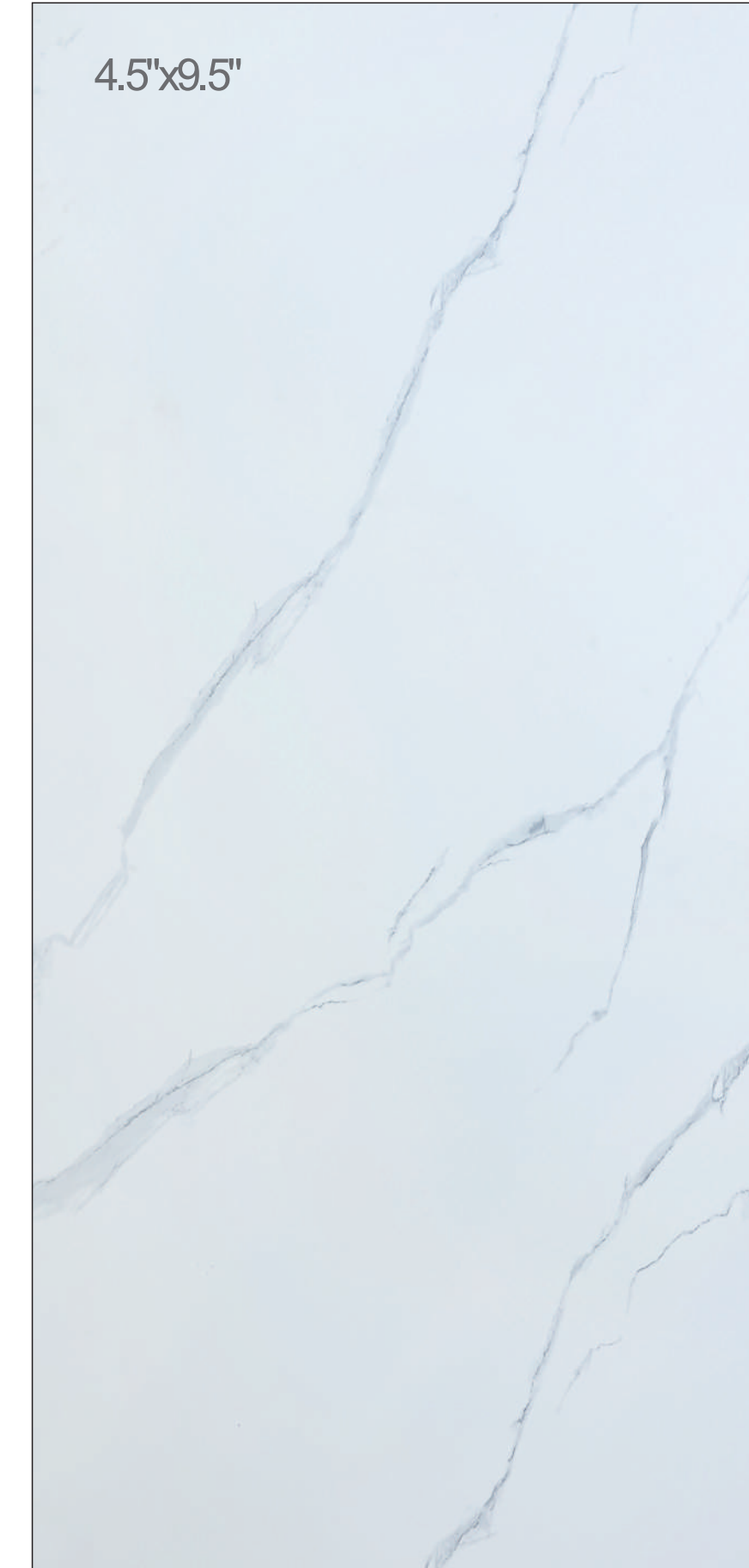
6H
HARDNESS



MARBLE SERIES



CRYSTAR
ACRYLIC LAMINATES



ACR-3034

MARBLE



ACR-3014

MARBLE





MARBLE SERIES



ACRYSTAR
ACRYLIC LAMINATES



ACR-9313

MARBLE



ACR-9314

MARBLE



TECHNICAL SPECIFICATION

THICKNESS : 1.5 mm (+/- 10%)
STANDARD SHEET SIZE : 2440mm x 1220mm

CLEANING & MAINTENANCE

- * Do not place any hot substrate or cookware directly on laminates.
- * Do not use thinner or any harsh cleaning agent to clean the laminate as it can give damage to surface of laminate.
- * Cleaning should be done with water along with a smooth cloth.
- * Exposure to temperature above 30°C may cause damage to surface.

CUTTING & INSTALLATION

- * Acrystar Acrylic Laminates can be cut by standard wood working tools.
- * Acrystar Acrylic Laminates can be easily pasted by using water based or any neutral adhesives which are easily available in market. Kindly note that no solvent based adhesives should be used.
- * Clean the laminate and base substrate by soft brush or soft cloth before application.
- * The pressing of laminate should be done from middle and move towards the sides and corners of laminate sheet.
- * Sufficient pressure should be given to ACRYSTAR ACRYLIC LAMINATE for almost 15 hours to get a good bonding strength.

IMPORTANT GUIDELINES

To avoid Air Bubbles/Crack and Yellow Patch/Color Fading problems, follow the instructions-

- * Use of correct adhesive for pasting laminates to avoid air bubble after installation.
- * Make use of good quality and even base substrate (MDF, Plywood, Particle Board) as low quality products may absorb moisture in uncertain weather and then it loses moisture and creates air bubble.
- * If the sheets are in roll form, Before application, they should be kept straight under pressure for minimum 48 hours for getting better results.
- * Give sufficient pressure to laminate upto 15 hours to get good bonding strength and to avoid any bubbles.
- * Laminate sheet should not exposed to direct sunlight to avoid the color fading and yellow patches.
- * Do not use any harsh chemical or cleaning agent to clean the surface.
- * Do not place any hot substrate or cookware directly on laminates.

LIMITED WARRANTY NOTE : Acrystar warrants that all its products are free from manufacturing defects and perfectly ideal for use in normal conditions. In case of any manufacturing defect, Acrystar is liable for the product cost only, Acrystar is not liable for any complains in the following cases :

- * Color variations from batch to batch production.
- * Improper handling of product or any transportation damage.
- * Improper installation of product.
- * Outdoor applications.
- * Exposure of laminate sheet to direct sunlight.

IT IS ADVISABLE TO CHECK THE BATCH NUMBER TO AVOID COLOR VARIATION. ACRYSTAR IS NOT LIABLE FOR ANY COMPLAINS IF THE PRODUCT IS NOT PROPERLY HANDLED, INSTALLED, MAINTAINED ACCORDING TO THE GIVEN GUIDELINES.

KINDLY REMOVE PROTECTIVE FILM AFTER 7 DAYS OF INSTALLATION OF LAMINATE SHEET.



EXTRA
DURABLE



ULTRA
HIGH GLOSS



ECO
FRIENDLY



WATER
RESISTANT



SKIN
SOFT

